

# >> LARGE INLET (XL) ROTARY VALVE

## >> FEATURES:

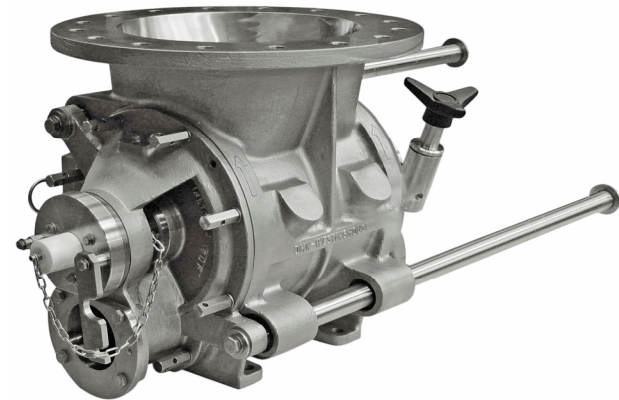
- High filling efficiency
- Large inlet size in relation to rotor volume
- Sheared angle inlet
- Minimum air leakage
- Pressure shock resistant and flame proof models up to 145 PSI available
- Customized solutions
- Bored flanges in accordance with PN10, ANSI 150 and JIS
- Versions conforming to ATEX 94/9/EC available

## Large Inlet (XL) Rotary Valves

The AL airlocks and BL blow through valves have been designed for many applications in the metering and pneumatic conveying of products in powder and granular form.

For applications where inlet size is more important than capacity and generally used for products with poor flowability, a range of valves with an enlarged inlet has been developed: the large inlet AXL and BXL valves.

The product line also includes USDA approved models for sanitary use in the food and pharmaceutical industry, the types Dairy and Dairy MZC. The stainless steel valves are easy detachable in a few minutes and meet the highest hygienic standards.



The AXL valves are available in four sizes, and other sizes are available upon request. The BXL valves are available in four sizes, and an optional extra enlarged inlet. Drive options include chain, direct, air and hydraulic drive.

## Product Information

The AXL valves are available in stainless steel. The BXL valves are available in stainless steel or aluminum. Other materials are optionally available on request.

The standard rotor has 9 fixed blades. Various rotor configurations are optionally available, such as adjustable blades, reduced capacity, scalloped, end disc, etc.

The valves have outboard ball bearings, and the shaft sealing is by means of gland packing, with the option of air purge.

The standard models are suitable for products up to a temperature of 304° F and a maximum pressure differential of 29 PSI.

Special configurations are available to accommodate temperatures between -392° F and +1652° F. Pressure shock resistant up to 145 PSI.

All models offer optimum venting through the large vent holes, which can be drilled to order.

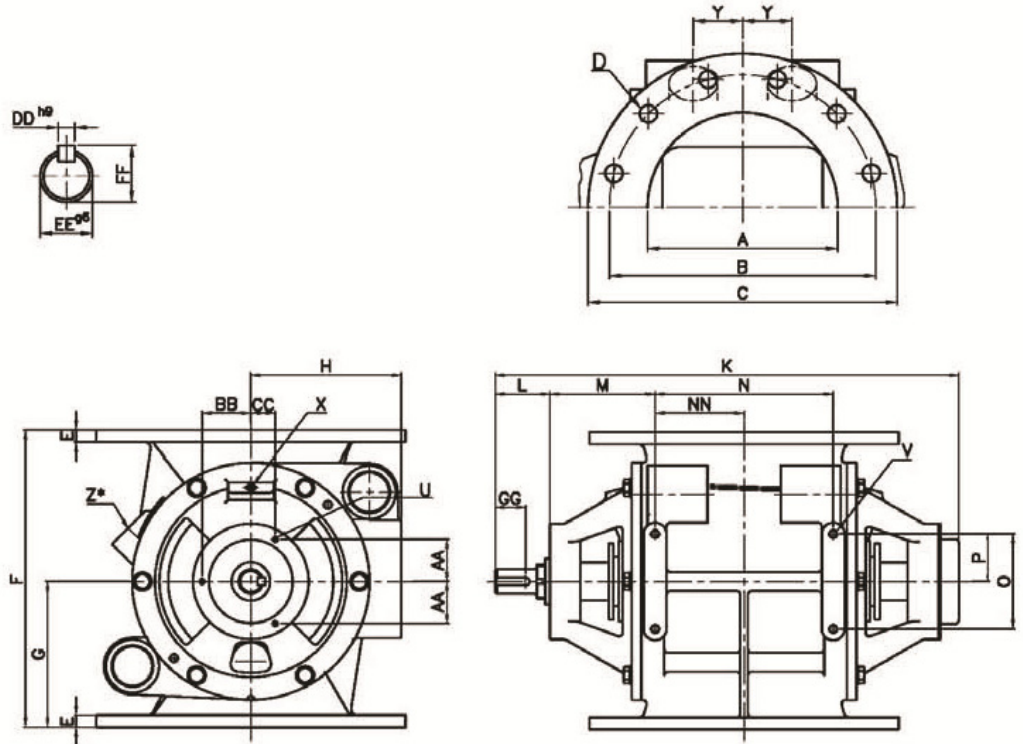


Powder Process-Solutions  
Div. of Powder-Solutions Group  
1620 Lake Drive West  
Chanhassen, MN 55317  
Ph: 952-279-5205  
Fax: 952-279-5206  
[sales@powder-solutions.com](mailto:sales@powder-solutions.com)  
[www.powder-solutions.com](http://www.powder-solutions.com)

# >> AXL ROTARY VALVE

## >> FEATURES:

- High filling efficiency
- Large inlet size in relation to rotor volume
- Sheared angle inlet
- Minimum air leakage
- Pressure shock resistant and flame proof models up to 145 PSI available
- Customized solutions
- Bored flanges in accordance with PN10, ANSI 150 and JIS
- Versions conforming to ATEX 94/9/EC available



Type AXL	Ltr/rev	DIN				ANSI				E	F	G	H	K	L	M	N	NN	O
		øA	øB	D	øC	øB	D												
200	5,5	200	295	8xø23	343	298,4	8xø22,2	14	330	165	165	524	60	125	190	-	100		
250	10,5	250	350	12xø23	406	361,9	12xø25,4	16	390	195	197,5	609	72	138	234	-	125		
300	19	300	400	12xø23	483	431,8	12xø25,4	21	450	225	222,5	659	72	138	284	142	125		
350	34	350	460	16xø23	530	476,2	12xø28,6	21	540	270	225	763	74	150	360	180	125		

Type AXL	P	U	V	X	Y	Z*	AA	BB	CC	DD	EE	FF	GG
200	50	3xM6	4xM10	¼"	53	1"	37,1	52,5	37,1	8	30	33	36
250	62,5	3xM8	4xM12	¼"	65	1¼"	55,4	64	32	10	32	35	44
300	62,5	3xM8	6xM12	¼"	75	1¼"	55,4	64	32	10	32	35	44
350	62,5	3xM10	6xM12	⅜"	95	1½"	73,6	85	42,5	10	38	41	45



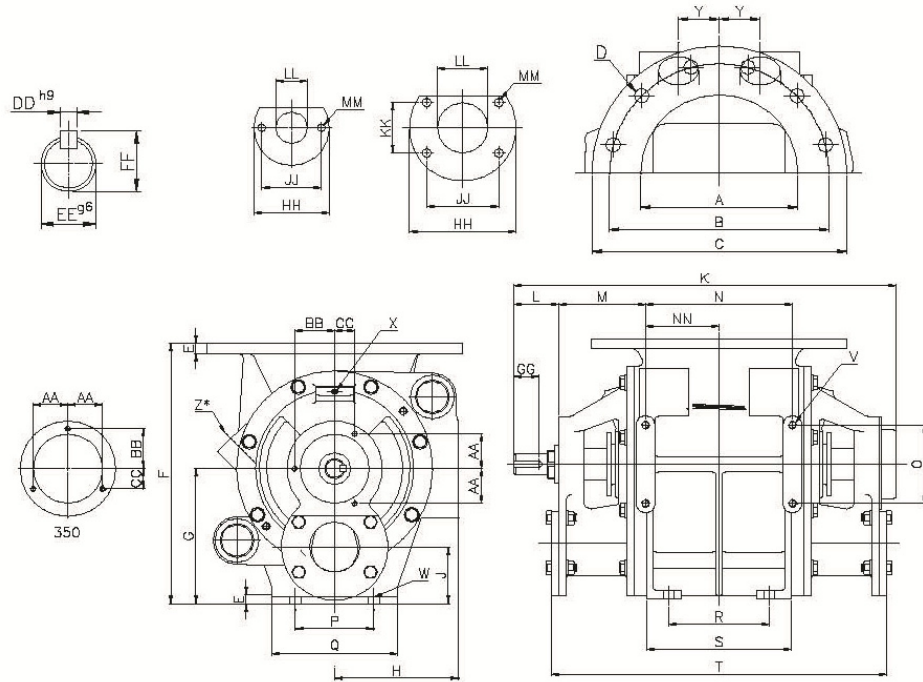
Powder Process-Solutions  
Div. of Powder-Solutions Group  
1620 Lake Drive West  
Chanhausen, MN 55317  
Ph: 952-279-5205  
Fax: 952-279-5206  
[sales@powder-solutions.com](mailto:sales@powder-solutions.com)  
[www.powder-solutions.com](http://www.powder-solutions.com)

Technical modifications are possible, dimensions in mm.

# >> BXL ROTARY VALVE

## >> FEATURES:

- High filling efficiency
- Large inlet size in relation to rotor volume
- Sheared angle inlet
- Minimum air leakage
- Pressure shock resistant and flame proof models up to 145 PSI available
- Customized solutions
- Bored flanges in accordance with PN10, ANSI 150 and JIS
- Versions conforming to ATEX 94/9/EC available



Type BXL	Ltr/rev	DIN			ANSI			E	F	G	H	J	K	L	M	N	NN	O	P	Q	R
		φA	φB	D	φC	φB	D														
200	5,5	200	295	8xφ23	343	298,4	8xφ22,2	14	340	175	165	75	524	60	125	190	--	100	130	160	130
250	10,5	250	350	12xφ23	406	361,9	12xφ25,4	16	415	215	197,5	90	609	72	138	234	--	125	160	200	160
300	19	300	400	12xφ23	483	431,8	12xφ25,4	21	495	245	222,5	100	659	72	138	284	142	125	170	210	200
350	34	350	460	16xφ23	530	476,2	12xφ28,6	26	595	295	225	120	763	74	150	360	180	125	190	240	260

Type BXL	S	T	U	V	W	X	Y	Z*	AA	BB	CC	DD	EE	FF	GG	HH	JJ	KK	LL	MM
200	190	460	3xM6	4xM10	4xφ14	¼"	53	1"	37,1	52,5	37,1	8	30	33	35	140	103,9	60,4	65	4xφ12
250	230	534	3xM8	4xM12	4xφ18	¼"	65	1¼"	55,4	64	32	10	32	35	43	170	114,7	80,3	80	4xφ14
300	274	584	3xM8	6xM12	4xφ18	¼"	75	1¼"	55,4	64	32	10	32	35	43	190	125	100	100	4xφ14
350	350	684	3xM10	6xM12	4xφ23	⅜"	95	1½"	73,6	85	42,5	10	38	41	44	230	163,8	114,7	125	4xφ14

Type BXXL	Ltr/rev	DIN			ANSI			E	F	G	H	J	K	L	M	N	NN	O	P	Q	R
		φA	φB	D	φC	φB	D														
350	19	350	460	16xφ23	530	476,2	12xφ28,6	26	535	245	222,5	100	659	72	138	284	142	125	170	210	200

Type BXXL	S	T	U	V	W	X	Y	Z*	AA	BB	CC	DD	EE	FF	GG	HH	JJ	KK	LL	MM
350	274	584	3xM8	6xM12	4xφ18	¼"	75	1¼"	55,4	64	32	10	32	35	43	190	125	100	100	4xφ14



Powder Process-Solutions  
Div. of Powder-Solutions Group  
1620 Lake Drive West  
Chanhausen, MN 55317  
Ph: 952-279-5205  
Fax: 952-279-5206  
[sales@powder-solutions.com](mailto:sales@powder-solutions.com)  
[www.powder-solutions.com](http://www.powder-solutions.com)

Technical modifications are possible, dimensions in mm.

# >> LARGE INLET (XL) ROTARY VALVE

## >> FEATURES:

- High filling efficiency
- Large inlet size in relation to rotor volume
- Sheared angle inlet
- Minimum air leakage
- Pressure shock resistant and flame proof models up to 145 PSI available
- Customized solutions
- Bored flanges in accordance with PN10, ANSI 150 and JIS
- Versions conforming to ATEX 94/9/EC available

## Other Valves:



AL-MZC



BL-DAIRY



AML



GL



DL



MLD-MALD-MGLD



SAL



TDV



M-TDV



PTD



FVV



FDV



DUC



SC



OS / GOS



Powder Process-Solutions  
 Div. of Powder-Solutions Group  
 1620 Lake Drive West  
 Chanhassen, MN 55317  
 Ph: 952-279-5205  
 Fax: 952-279-5206  
[sales@powder-solutions.com](mailto:sales@powder-solutions.com)  
[www.powder-solutions.com](http://www.powder-solutions.com)